

TÓBAKSVARNANEFND

1995



STÆRÐ ÚRTAKS : 3x 1400 MANNNS



GERÐ ÚRTAKS : SLEMBIÚRTAK



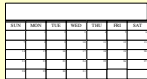
ALDUR : 15-89 ÁRA



FRAMKVÆMDAMÁTI : SÍMLEIÐIS



BÚSETA : ALLT LANDIÐ



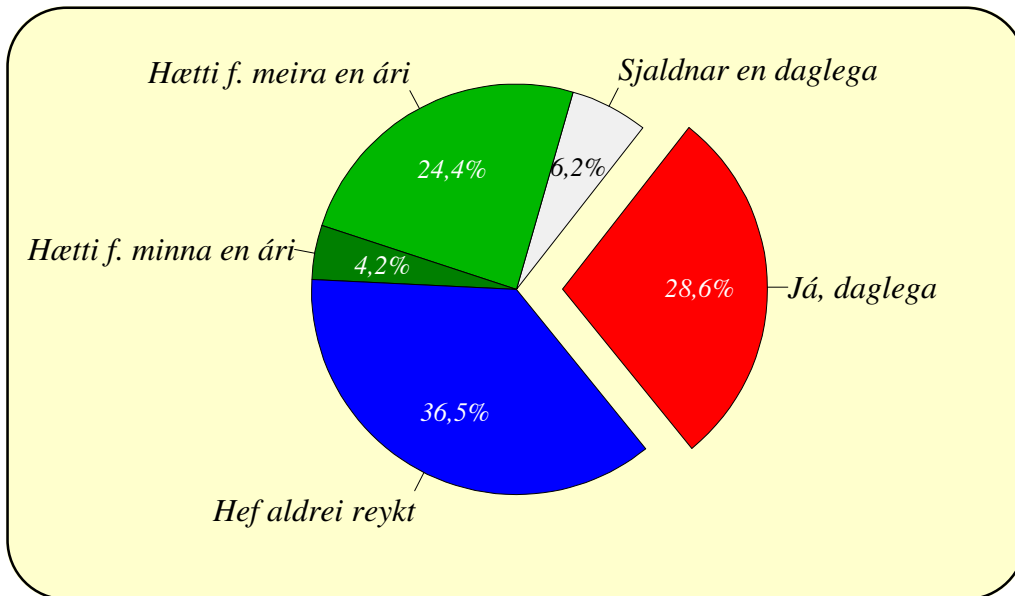
FRAMKVÆMDATÍMI : JANÚAR
MAÍ
SEPTEMBER



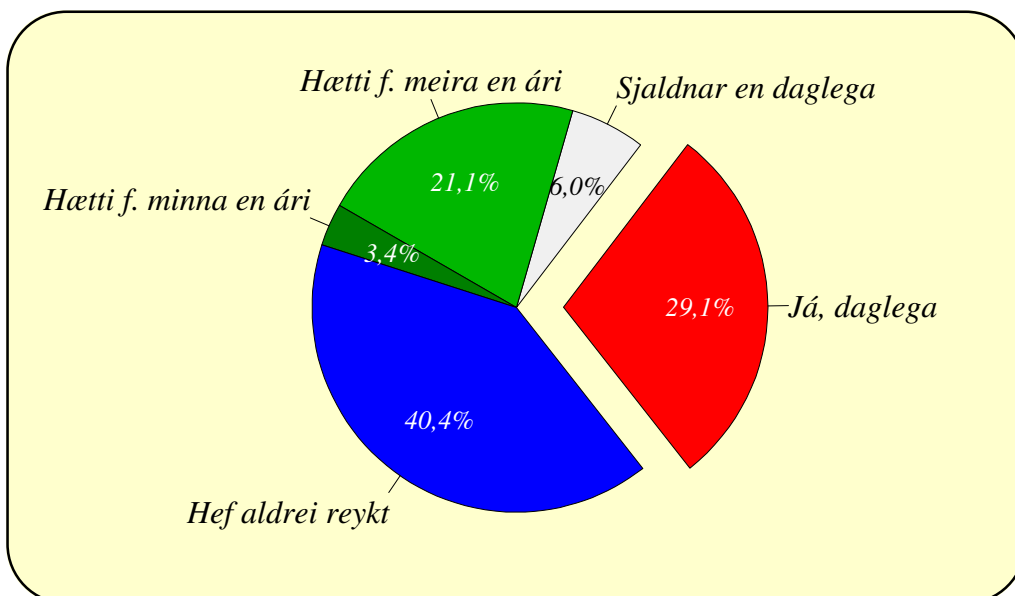
SVARHLUTFALL : 73,0%
72,9%
72,3%

REYKINGAVENJUR, EFTIR KYNJUM, 18-69 ÁRA

KARLAR

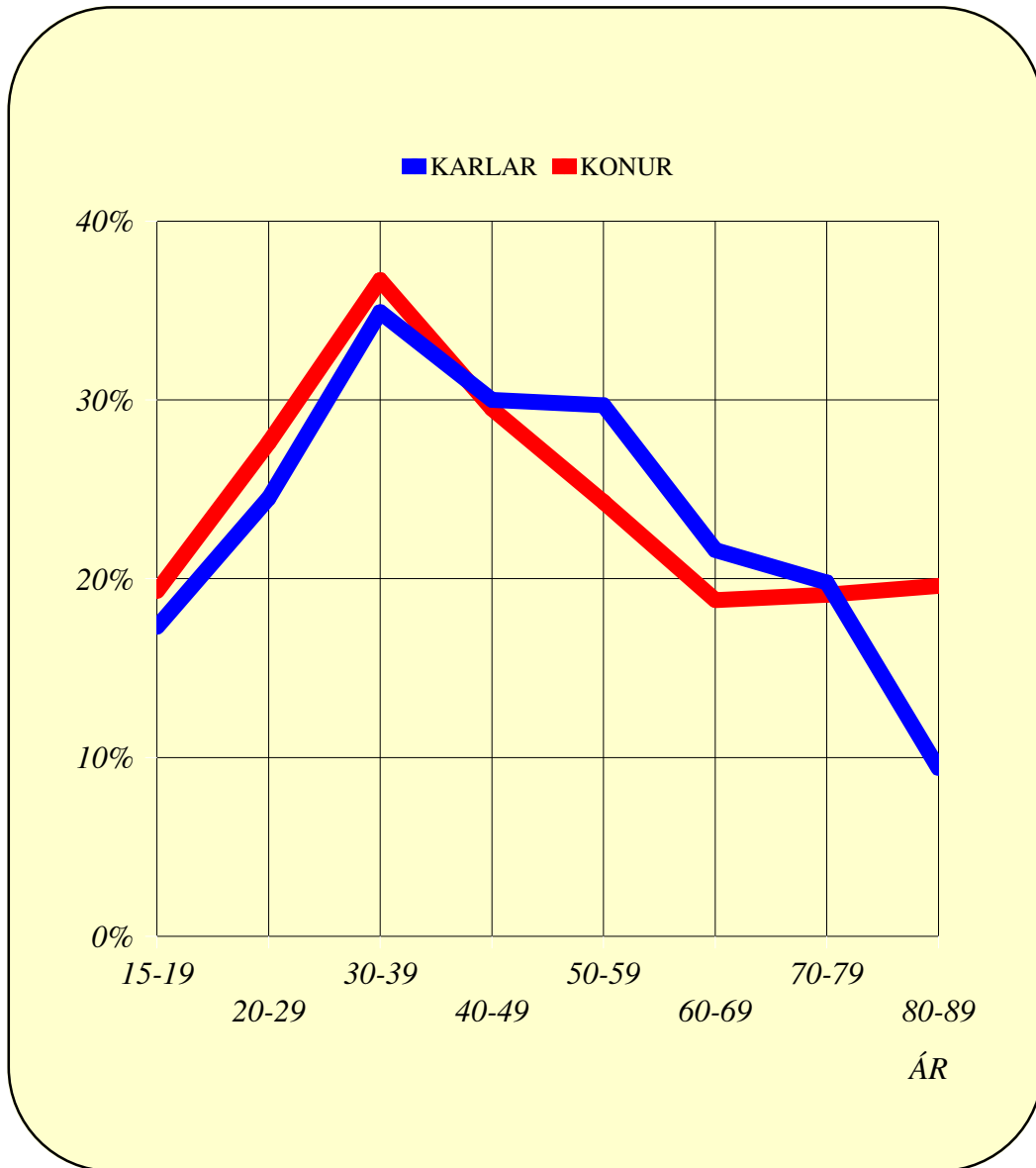


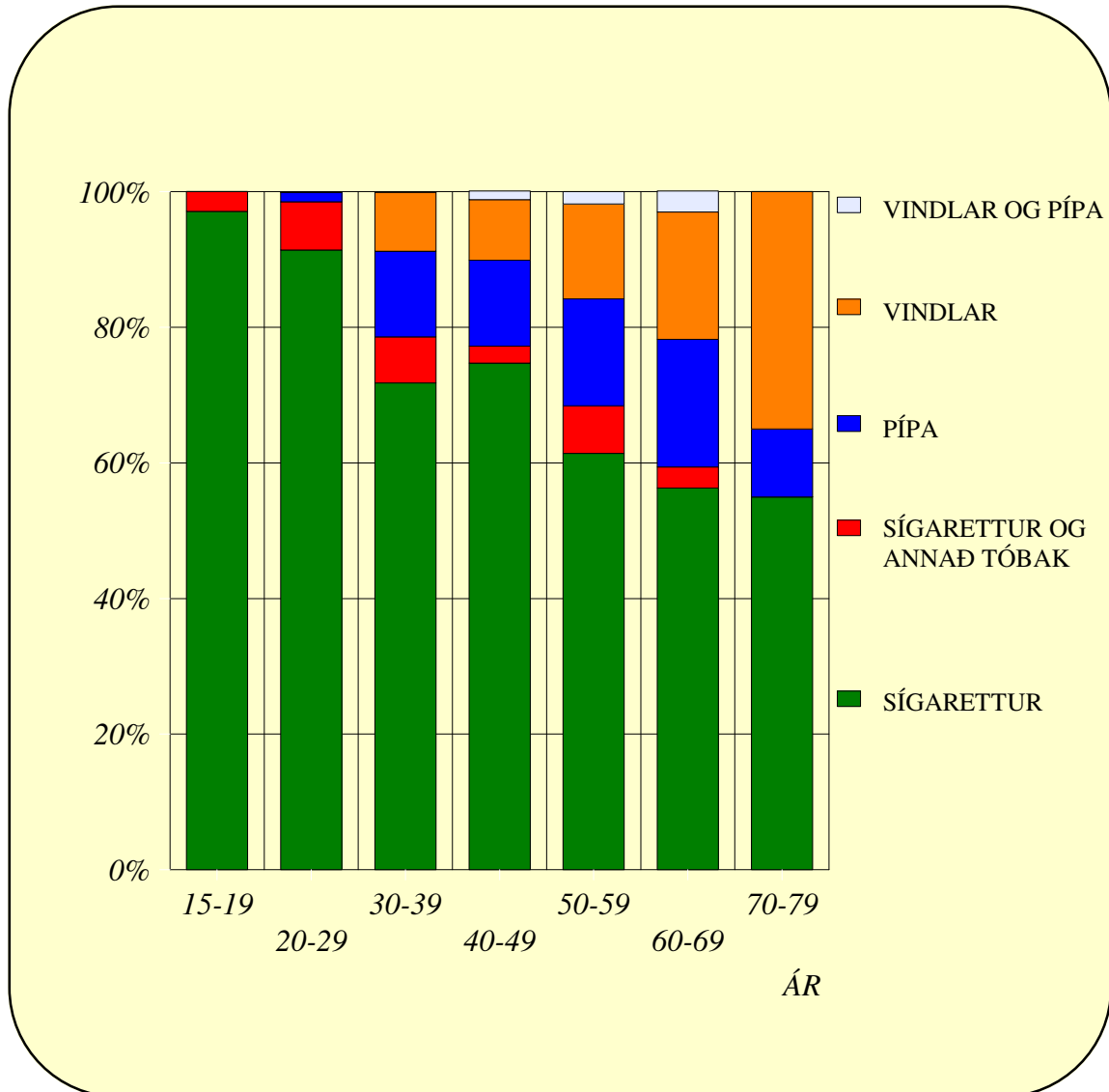
KONUR



DAGLEGAR REYKINGAR

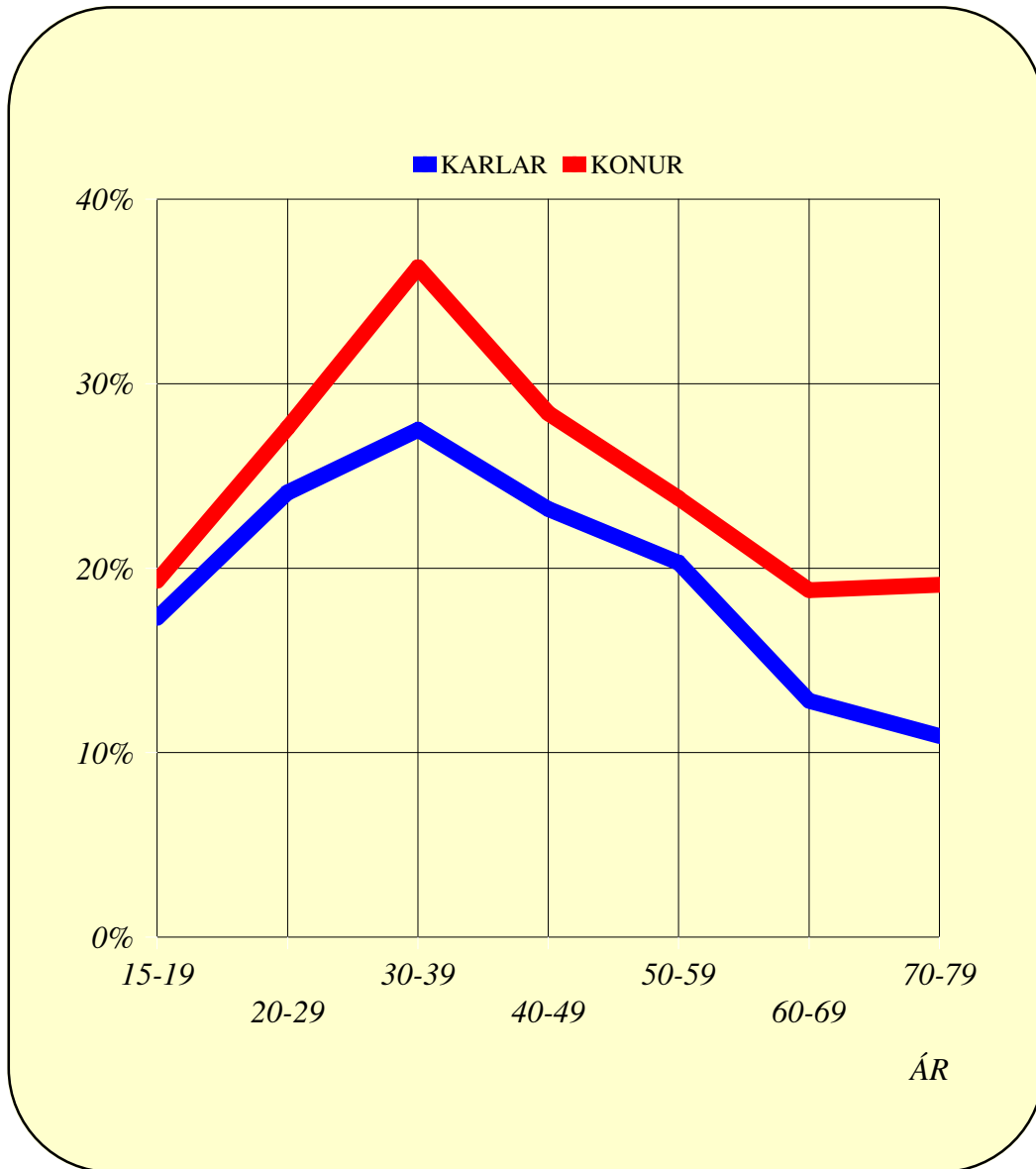
EFTIR ALDRI OG KYNJUM

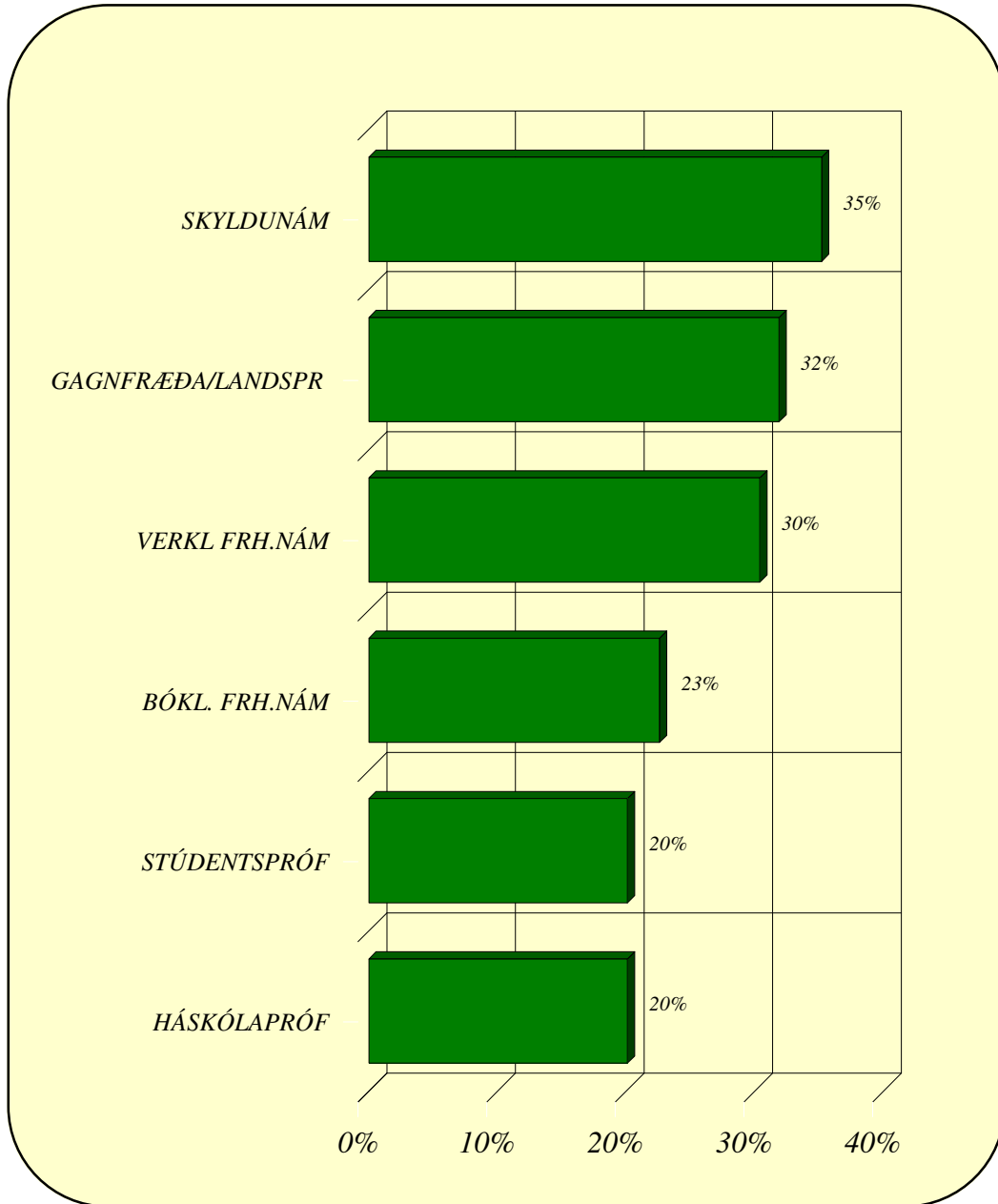


DAGLEGAR REYKINGAR KARLA, 15-79 ÁRAEFTIR TEGUNDUM OG ALDRI

DAGLEGAR SÍGARETTUREYKINGAR

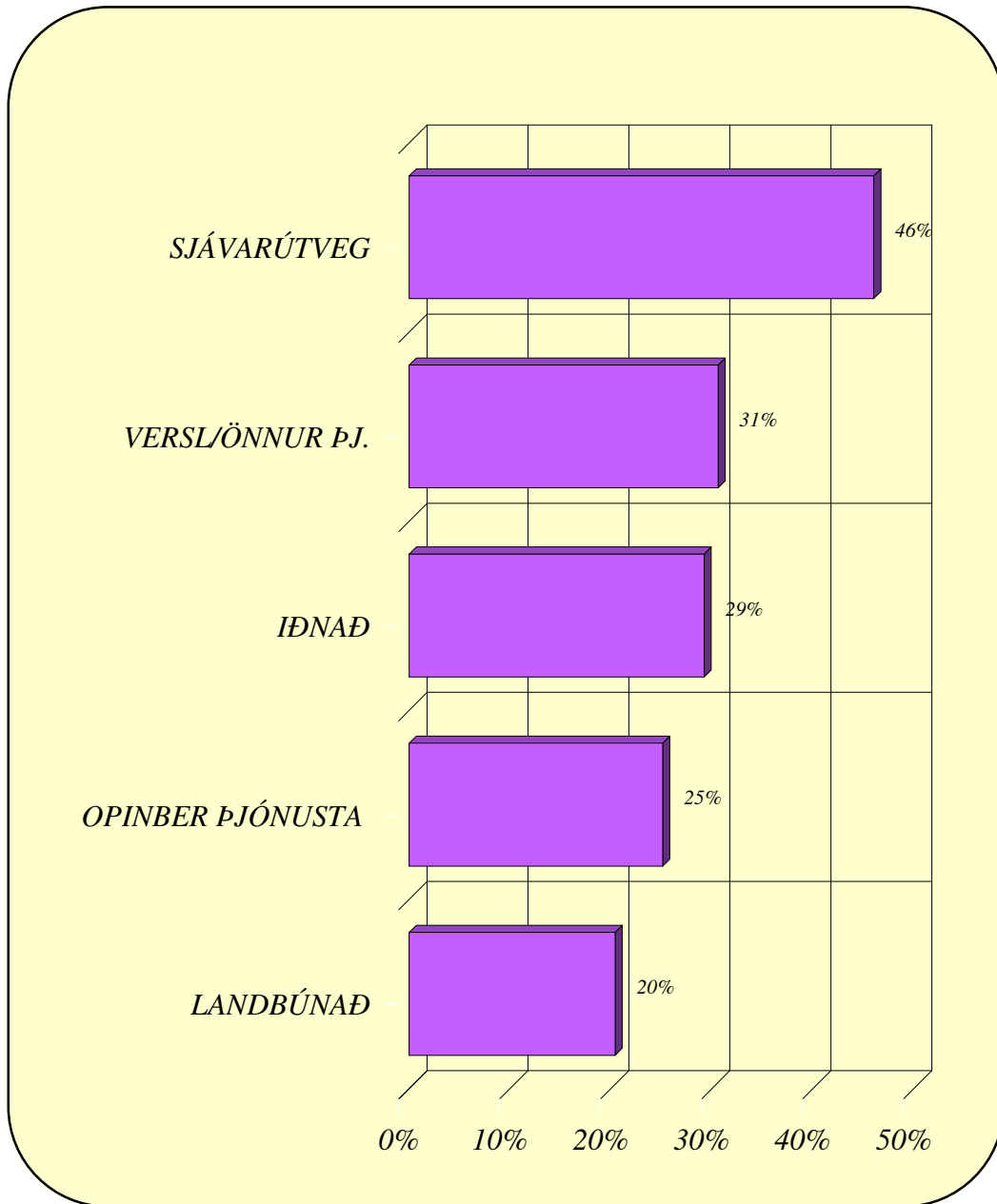
EFTIR ALDRI OG KYNJUM



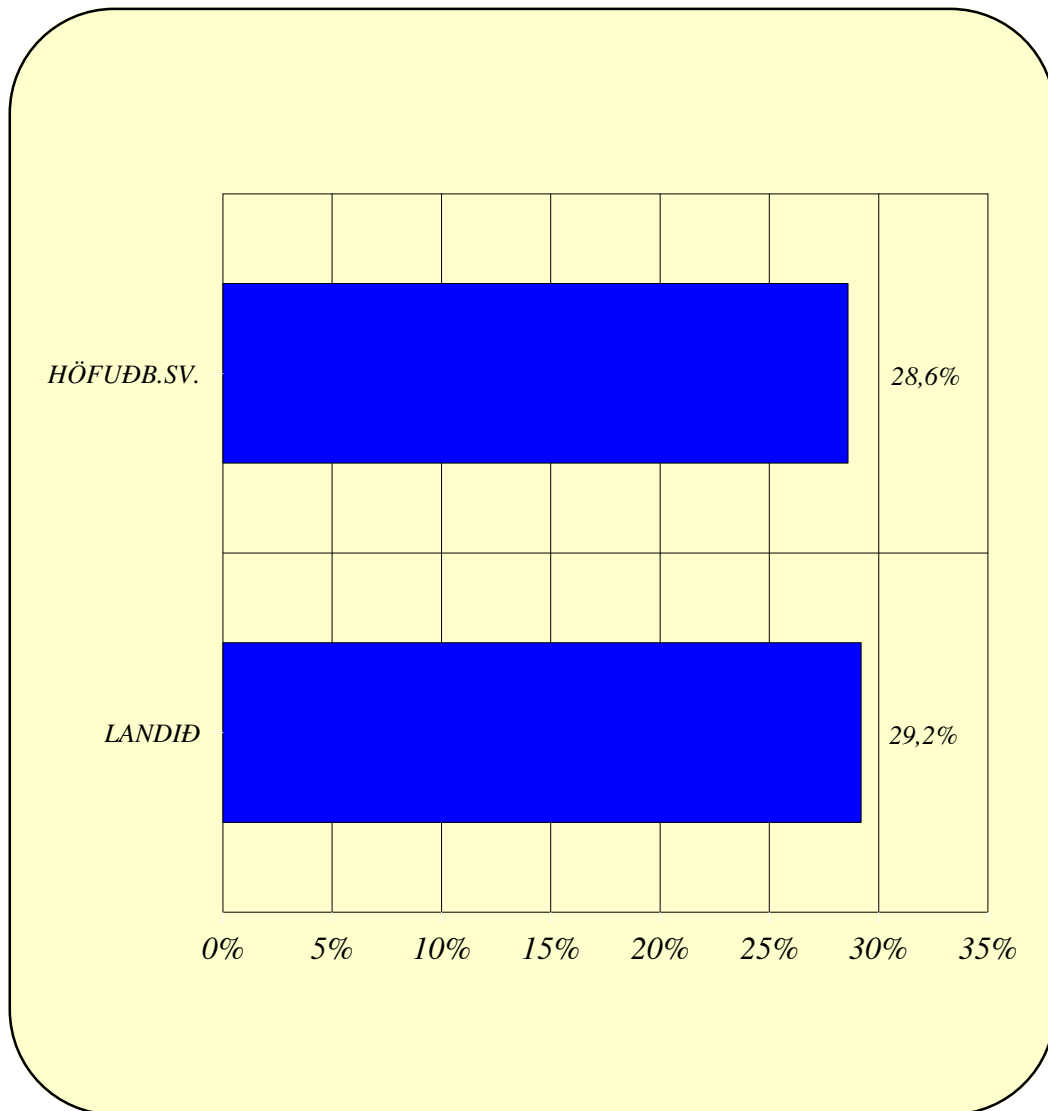
DAGLEGAR REYKINGAR, 18-69 ÁRA*EFTIR SKÓLAGÖNGU*

DAGLEGAR REYKINGAR, 18-69 ÁRA

EFTIR ATVINNUGREIN



DAGLEGAR REYKINGAR, 18-69 ÁRA
EFTIR BÚSETU*



* Ekki marktækur munur.

